

CASCOS

LIFTING PROFESSIONALS

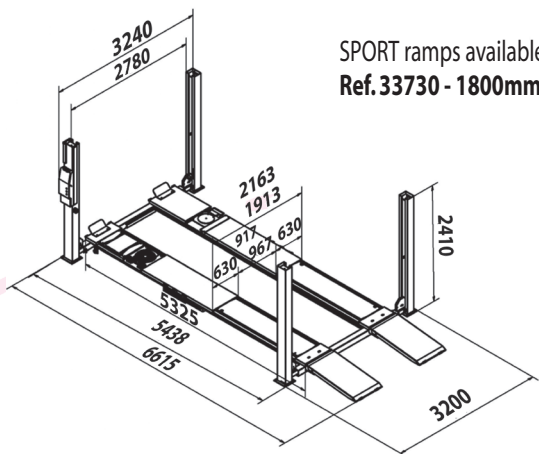


4 POST LIFTS



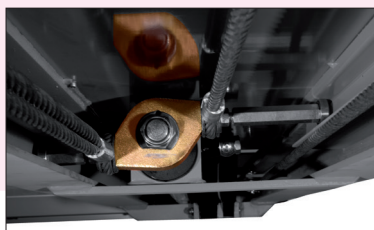
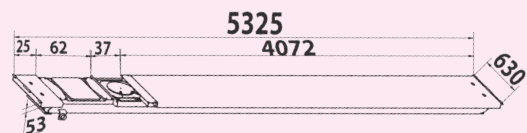
C450 MOT ATL

Type	Ref.	Min	kg			
FLAT PLATFORM with play detector	13355A	180 mm	5Tn	1500 Kg.	230-400V/3ph/50Hz/3kW 230V/1ph/50Hz/2,2kW	40"



SPORT ramps available
Ref.33730 - 1800mm

Flat platform with front recessed and play detector.



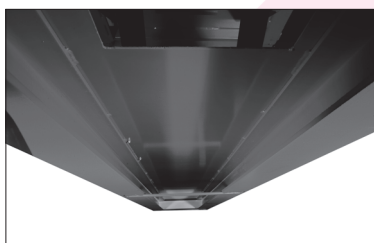
Security indicator

Indicator that prevents a bad levelling, and ensures that the cylinder works within the best conditions assuring a **longer lasting life**.



Hydraulic cylinders

produced and tested one by one in our factory. The cylinders count with the **security valves** that detects any lack of oil, closing the circuit and preventing the lift from the descending.



Our platforms are built with:

Reinforced super structure by double T steel beams for intensive use, keeping the platform flat/straight over the years.



Security x2

Double security system in each post :

- **Mechanical** (safety bars)
- **Pneumatic** (security ladders)

Ensures a better reliability than the electromagnetic security system.

Minimal height

Our platforms descend almost to the ground level avoiding the use of bulky run-up ramps to allow sport cars to go in (and consequently, using less garage area).



The lowest on the market!

H. Min. 180 mm

Repairable during at least 10 years.

We ensure spare parts availability during at least this period.



2006/42/CE & EN - 1493:2011
European Directives
& Approved Standards



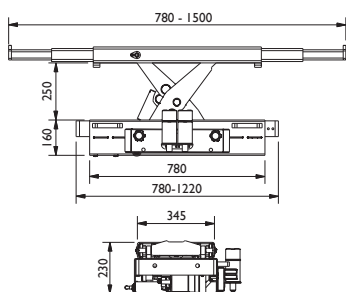
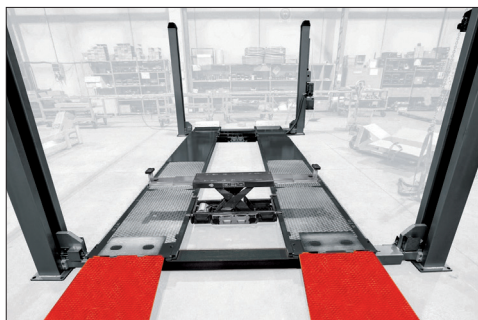
Ref. 13355A

4 POST LIFTS C450 MOT ATL

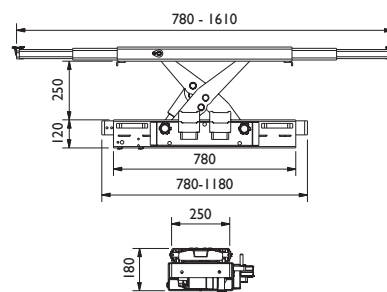
OPTIONAL EQUIPMENT

Oleopneumatic Jacks

4 Tn



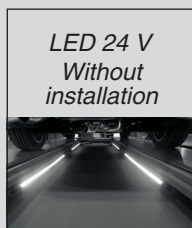
2 - 2,6 Tn



	Without lip	With lip
Capacity	Ref	Ref
2 Tn	50515	50514
2,6 Tn	50517	50516
4 Tn	50565	50552

Accesories

Magnetic lighting kit



Ref.:
34053

Top Covers



Ref.:
32129

Magnetic holder for tools



Ref.:
26141

Additional buttoning column opposite



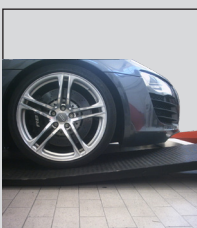
Ref.:
32160
32170

Magnetic air Kit



Ref.:
26177

Sport ramps kit



Ref.:
33730

Integrated power plug Assembled in factory



Ref.:
22164

www.cascos.es



CASCOS

CASCOS MAQUINARIA, S.A.

Zurrupitieta, 8 - Pol. Ind. Jundiz • Apartado 264
01015 VITORIA-GASTEIZ / España/Spain
Tel. +34 945 290 294 / Fax +34 945 290 055
e-mail: info@cascos.es

THE PLANS AND PHOTOGRAPHS SHOWN IN THIS BROCHURE ARE FOR ILLUSTRATIVE PURPOSES ONLY, AND CM RESERVES THE RIGHT FROM TIME TO TIME TO MAKE MODIFICATIONS.