

# CASCOS

LIFTING PROFESSIONALS



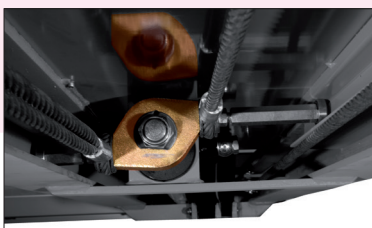
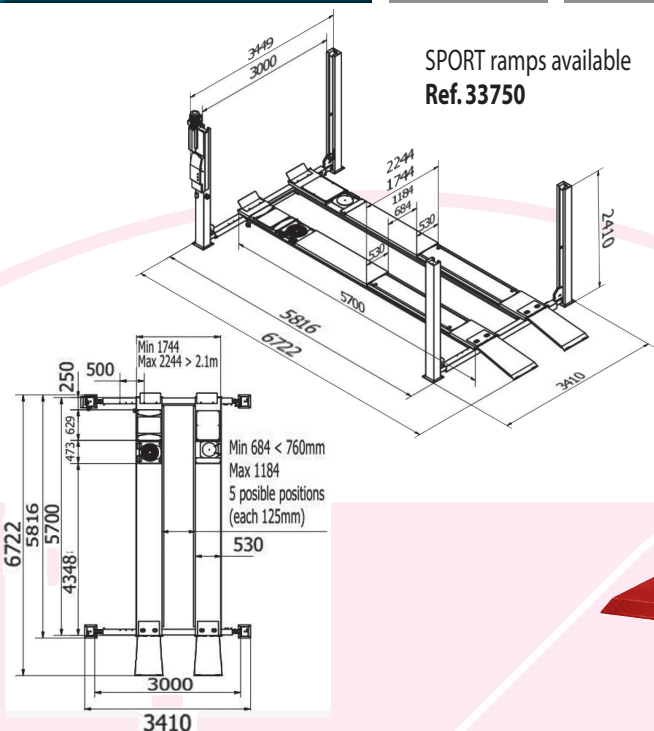
## 4 POST LIFTS



# C450XL MOT ATL

Type	Ref.	Min	kg	Icon	Icon	Icon
<b>FLAT PLATFORM with play detector</b>	13376A	180 mm	5Tn	1600 Kg.	230-400V/3ph/50Hz/3kW 230V/1ph/50Hz/2,2kW	40"

SPORT ramps available  
Ref. 33750



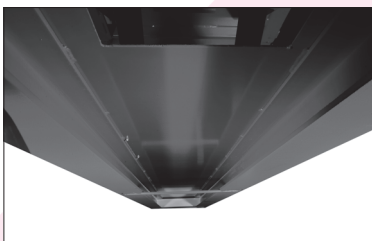
### Security indicator

**Indicator** that prevents a bad levelling, and ensures that the cylinder works within the best conditions assuring a **longer lasting life**.



### Hydraulic cylinders

produced and tested one by one in our factory. The cylinders count with the **security valves** that detects any lack of oil, closing the circuit and preventing the lift from the descending.



### Our platforms are built with:

Reinforced super structure by double T steel beams for intensive use, keeping the platform flat/straight over the years.



### Security x2

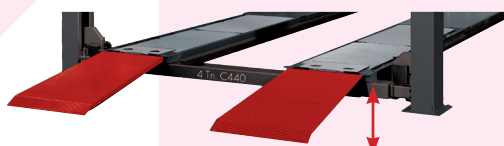
Double security system in each post:

- **Mechanical** (safety bars)
- **Pneumatic** (security ladders)

Ensures a better reliability than the electromagnetic security system.

### Minimal height

Our platforms descend almost to the ground level avoiding the use of bulky run-up ramps to allow sport cars to go in (and consequently, using less garage area).



**The lowest on the market!**

H. Min. 180 mm

### Repairable during at least 10 years.

We ensure spare parts availability during at least this period.



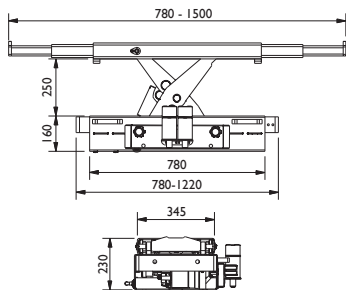
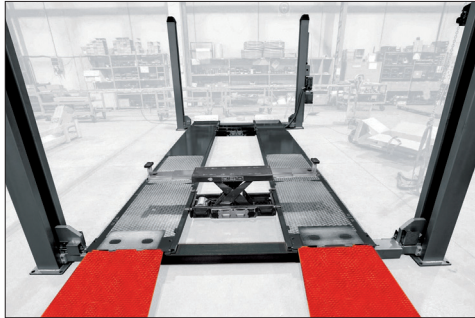
2006/42/CE & EN - 1493:2011  
European Directives  
& Approved Standards



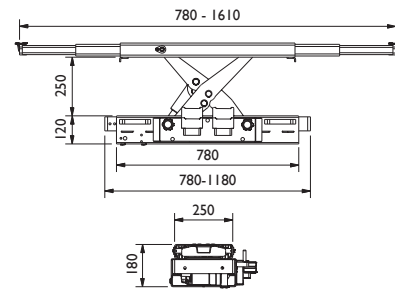
## OPTIONAL EQUIPMENT

### Oleopneumatic Jacks

4 Tn



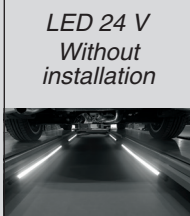
2 - 2,6 Tn



	Without lip	With lip
Capacity	Ref	Ref
2 Tn	50515	50514
2,6 Tn	50517	50516
4 Tn	50565	50552

### Accesorios

**Magnetic lighting kit**



Ref.: 34053

**Top Covers**



Ref.: 32129

**Magnetic holder for tools**



Ref.: 26141

**Additional buttoning column opposite**



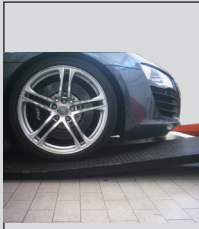
Ref.: 32160  
32170

**Magnetic air Kit**



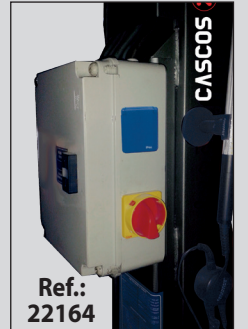
Ref.: 26177

**Sport ramps kit**



Ref.: 33750

**Integrated power plug Assembled in factory**



Ref.: 22164