

CASCOS

LIFTING PROFESSIONALS



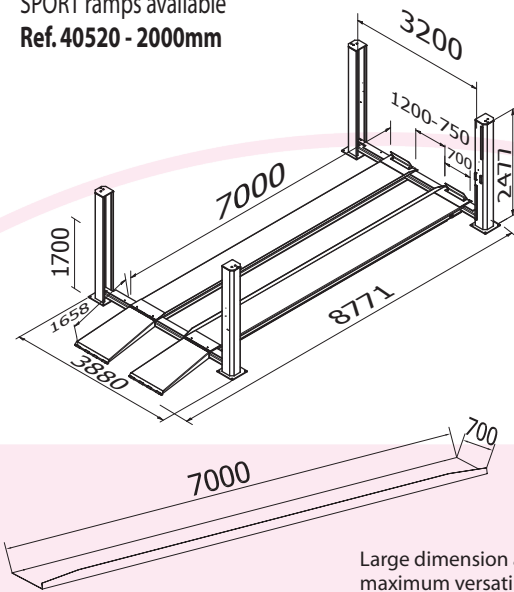
4 POST LIFTS



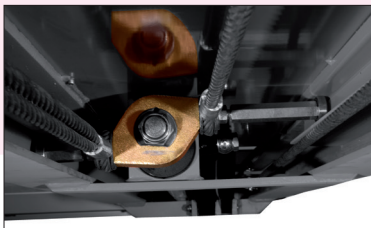
C4100

| Type | Ref. | Min | kg | | | |
|------------|-------|--------|------|----------|--|-----|
| Industrial | 13331 | 265 mm | 12Tn | 3200 Kg. | 230-400V/3ph/50Hz/3kW 230V/1ph/50Hz/2,2kW | 45" |

SPORT ramps available
Ref. 40520 - 2000mm



Large dimension and maximum versatility.



Security indicator

Indicator that prevents a bad levelling, and ensures that the cylinder works within the best conditions assuring a **longer lasting life**.

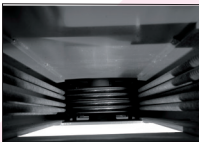


Hydraulic cylinders

produced and tested one by one in our factory. The cylinders count with the security valves that detects any lack of oil, closing the circuit and preventing the lift from the descending.

Our platforms are built with:

Reinforced super structure by double T steel beams for intensive use, keeping the platform flat/straight over the years.



Double cable-pulley system.



Large dimension and maximum versatility.



Security x2

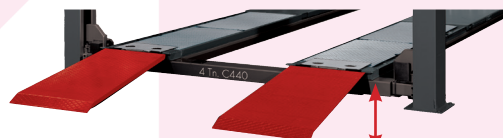
Double security system in each post:

- **Mechanical** (safety bars)
- **Pneumatic** (security ladders)

Ensures a better reliability than the electromagnetic security system.

Minimal height

Our platforms descend almost to the ground level avoiding the use of bulky run-up ramps to allow sport cars to go in (and consequently, using less garage area).



The lowest on the market!

H. Min. 265 mm

Reparable during at least 10 years.

We ensure spare parts availability during at least this period.



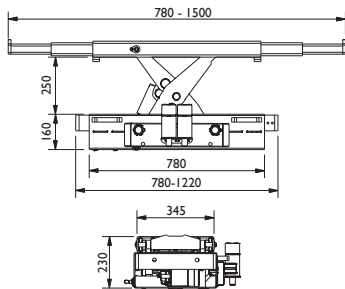
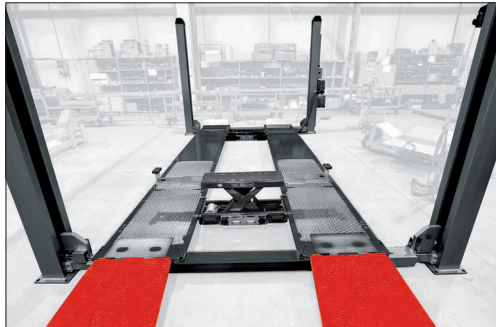
2006/42/CE & EN - 1493:2011
European Directives
& Approved Standards



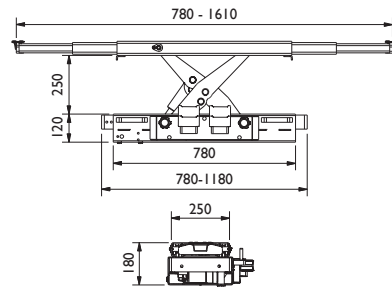
OPTIONAL EQUIPMENT

Oleopneumatic Jacks

4 Tn



2 - 2,6 Tn



| | With lip |
|----------|----------|
| Capacity | Ref |
| 2 Tn | 50514 |
| 2,6 Tn | 50516 |
| 4 Tn | 50552 |

Accesories

Magnetic lighting kit

LED 24 V
Without installation

Ref.: 34053

Top Covers

Ref.: 32129

Magnetic holder for tools

Ref.: 26141

Additional buttoning column opposite

Ref.: 32160
32170

Sport ramps kit

Ref.: 40520

Magnetic air Kit

Ref.: 26177

Integrated power plug Assembled in factory

Ref.: 22164